

IRB Decision Tree #1

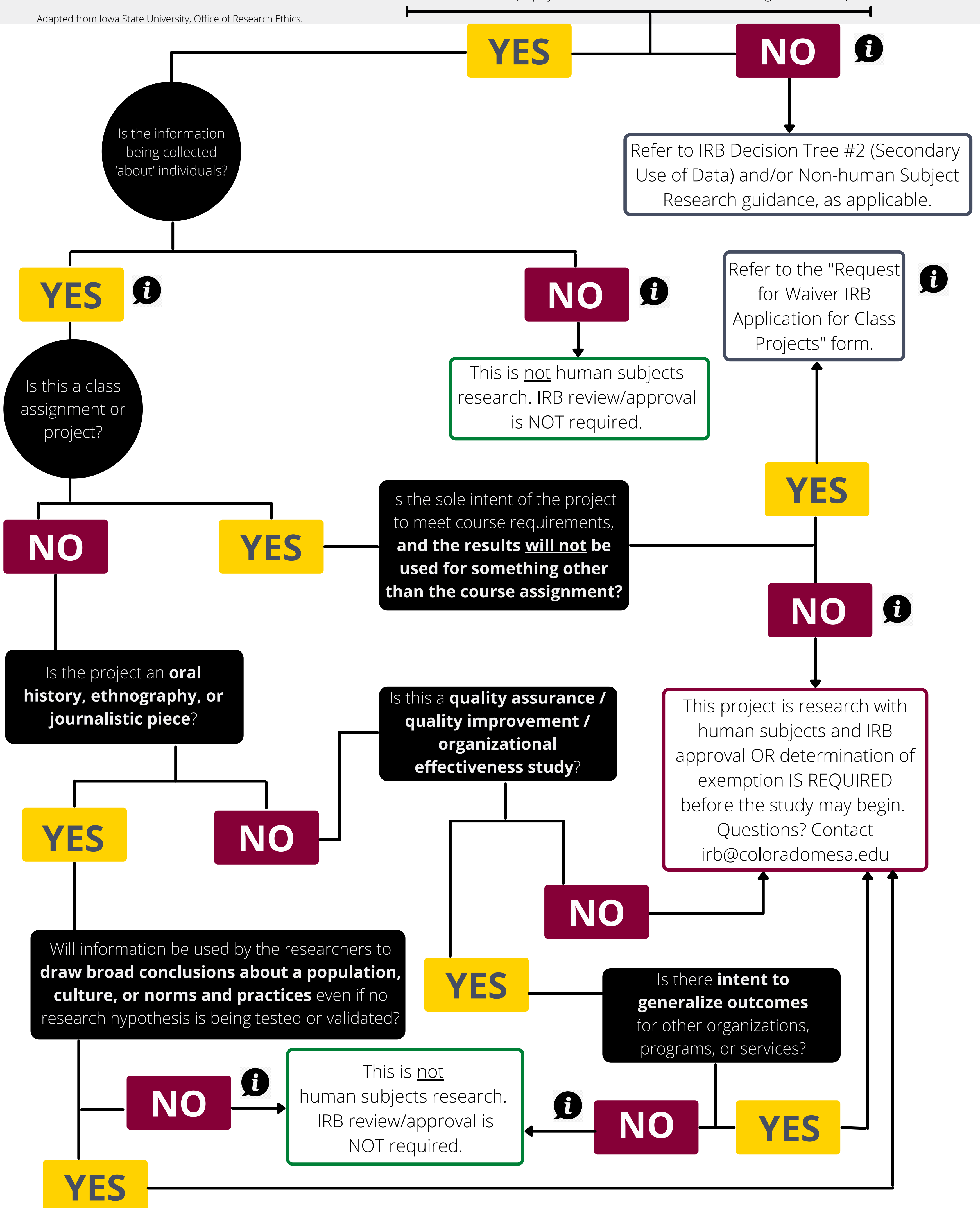


Will you, a member of your research team or, a collaborator observe, interact with, or intervene with living individuals to gather information that will be used for research?

Examples:

- Surveys, questionnaires, focus groups, interviews
- Physical/Electronic games, experiments, or tasks
- Biomedical/Physical procedures, e.g. imagine, scanning, blood collection, exercise, etc.
- Diet or nutrition studies, taste tests
- Studies on effectiveness of educational strategies, teaching methods, curricula
- Use of instruments, sensors, electronic devices, apps, software, or recording mechanisms (e.g., video, screen capture, key logging, etc.) to collect data or monitor or influence behavior
- Passive observation of private behavior (in physical/online environments, incl. social media)
- Studies examining individuals' responses to manipulation of their physical/online environment
- Any other activity that involves observation of, or interaction with, individuals to gather information for research (in physical or online environments, including social media)

Adapted from Iowa State University, Office of Research Ethics.



(HOVER OVER INFO ICON TO SEE HELP/ADDITIONAL GUIDANCE)