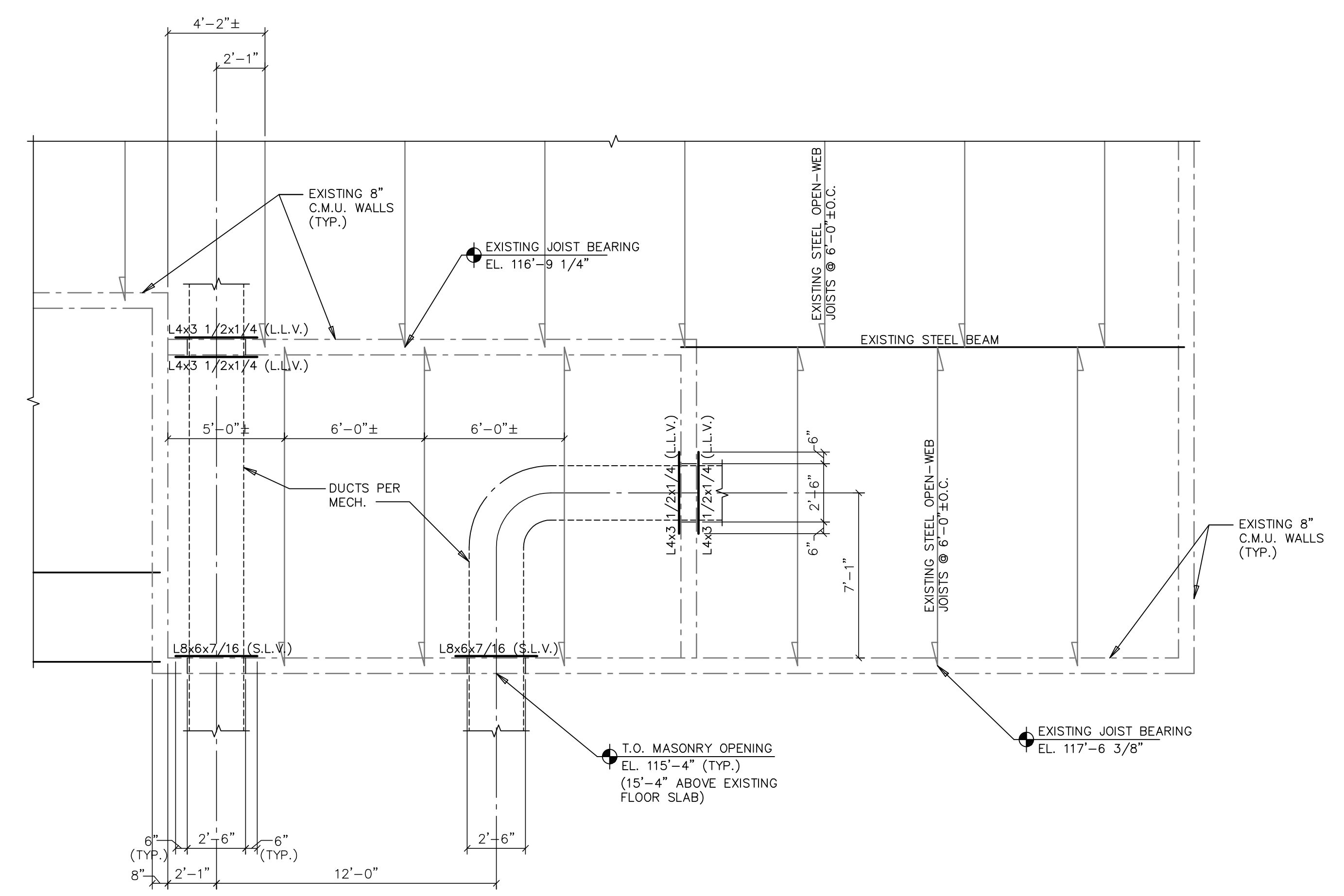


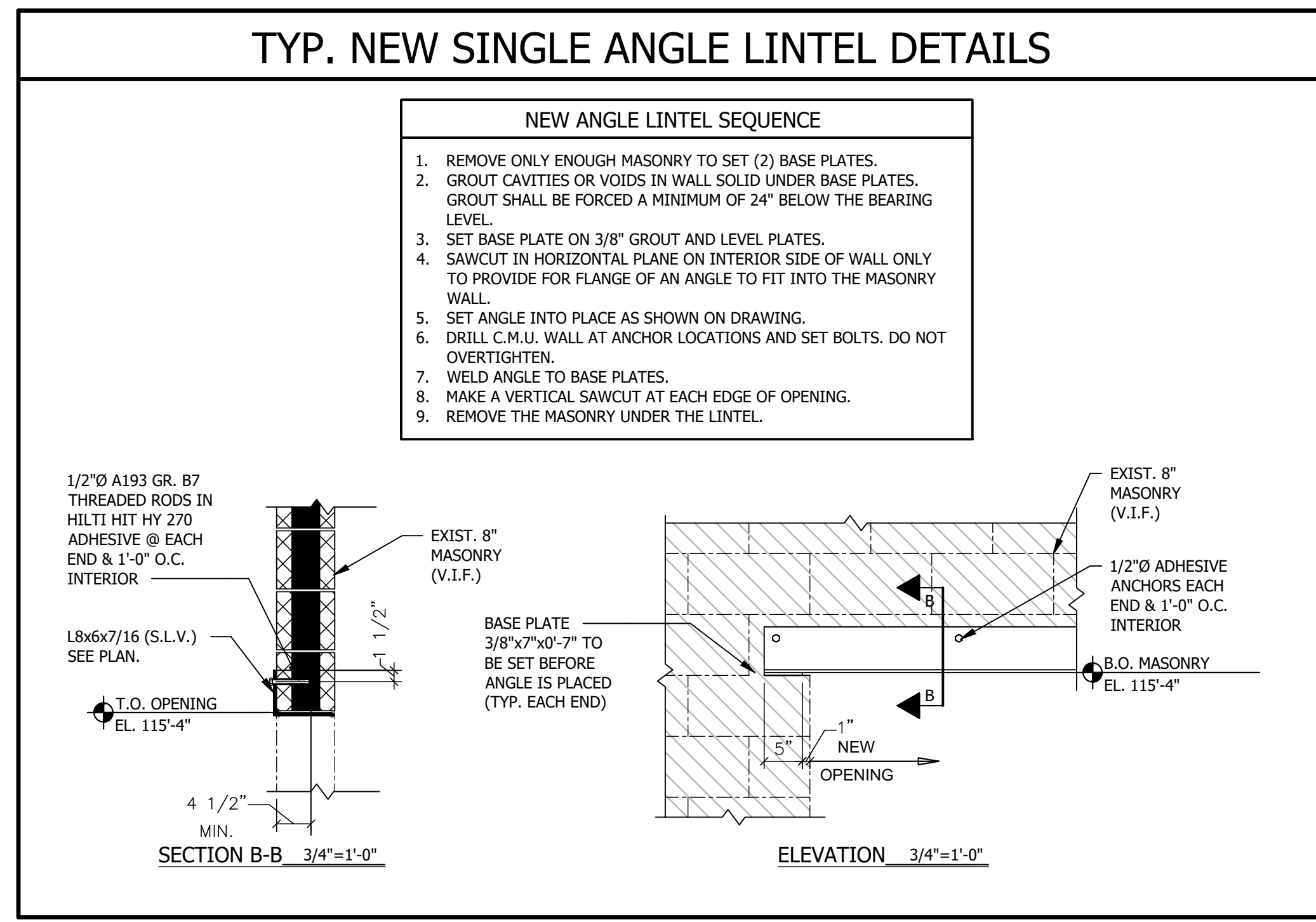
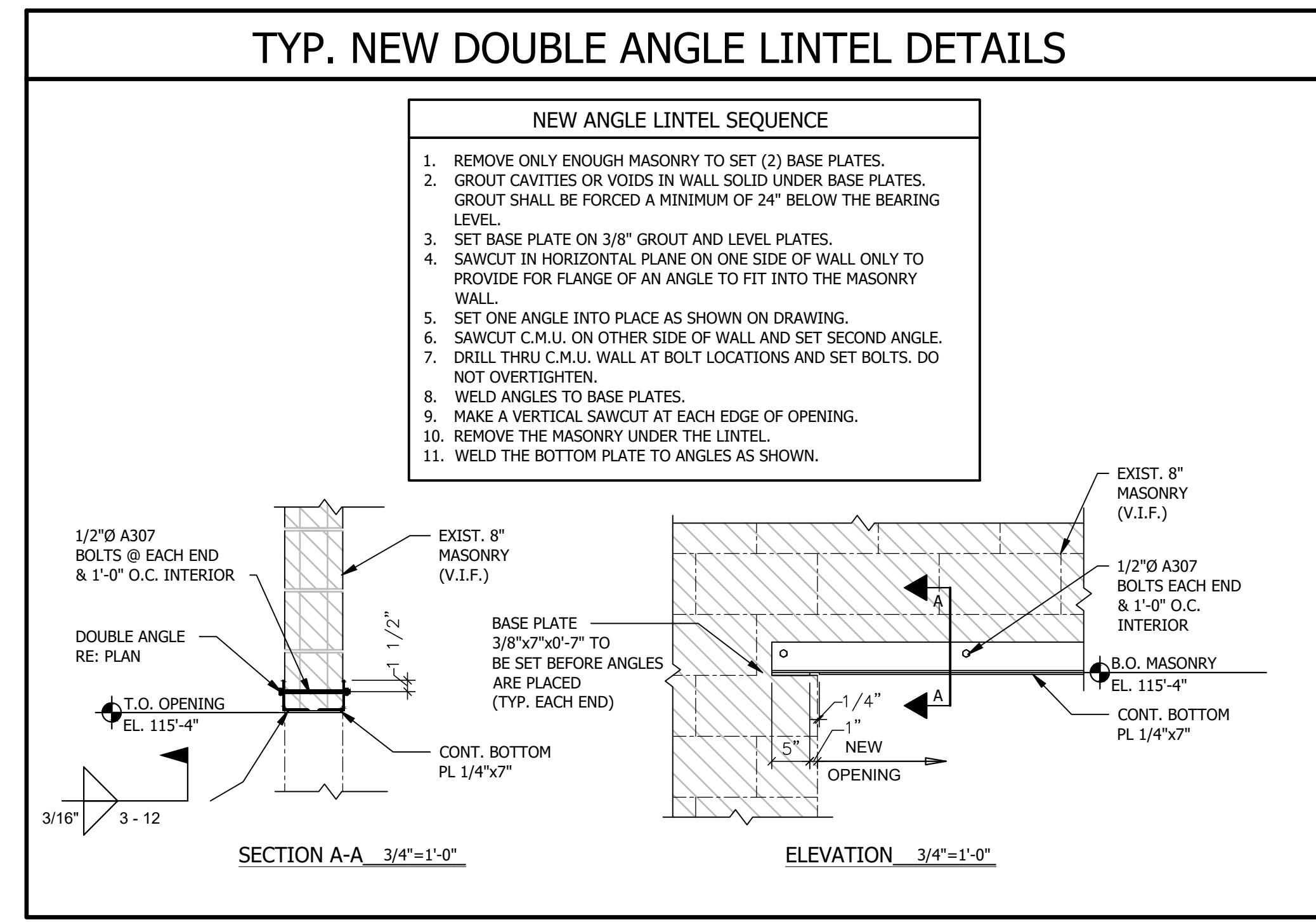
Lindauer-Dunn, Inc.
STRUCTURAL ENGINEERS

802 Road Avenue
Co. 81501
PHONE: 970-241-0900
FAX: 970-243-2430
www.lindauerdunn.com

CMU TECH WELDING
MECHANICAL - WELDING LAB EXHAUST WALL PENETRATIONS
2508 BLICHMAN AVENUE
GRAND JUNCTION, COLORADO
FOR: BIGHORN CONSULTING ENGINEERS, INC.



PARTIAL EXISTING ROOF FRAMING PLAN 1/4" = 1'-0"
 1. VERIFY EXISTING DIMENSIONS AND STRUCTURAL CONDITIONS IN THE FIELD PRIOR TO CONSTRUCTION.
 2. ALL NEW STRUCTURAL STEEL PLATES AND ANGLES SHALL CONFORM TO ASTM A36.



REVISIONS:

JOB #	24.068
DRAWN BY:	KDN
CHECKED BY:	JAD
DATE:	09/24/24

SHEET #
S1